

# **EPSOM AND EWELL COMMUNITY SAFETY PARTNERSHIP**

## **DRAFT TERMS OF REFERENCE**

### **Purpose and role**

The Epsom and Ewell Community Safety Partnership is a multi-agency strategic group established as part of the Crime and Disorder Act 1998. The Act gave local agencies shared responsibility for developing plans to reduce crime and disorder in their area. This partnership approach is built on the premise that no single agency can deal with, or be responsible for dealing with, complex community safety issues, and that these issues can be addressed more effectively and efficiently through working in partnership.

### **Agencies represented:**

- Surrey Police
- Borough Council
- County Council
- Business Improvement District (BID)
- Clinical Commissioning Group
- Probation Service
- Surrey Fire Service
- Main Registered Housing Provider (Housing Association)
- Voluntary Sector representative (eg Victim Support)

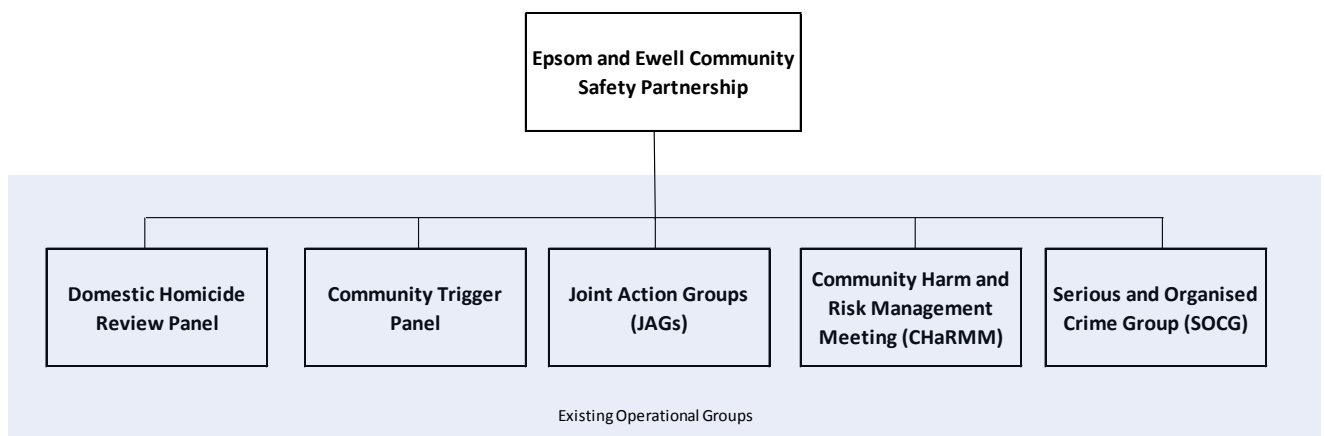
### **Terms of Reference:**

1. To develop and oversee implementation of the annual Partnership Community Safety Action Plan;
2. Keep an overview of crime and anti-social behaviour levels across the borough and provide strategic direction where appropriate;
3. Identify and bid for external sources of funding when available;
4. Maintain contact and influence with the new countywide combined Community Safety and Health and Wellbeing Partnership Board (CSB) related working groups and Police and Crime Commissioner (PCC);
5. Promote the role of partners in preventing and tackling crime in the local area;
6. Ensure compliance with all statutory Community Safety Partnership (CSP) responsibilities and keep abreast of emerging national, county or local changes to policy or legislation affecting the Partnership;

7. Oversee use and implementation of relevant powers, e.g. those relating to the Anti Social Behaviour (ASB), Crime and Policing Act 2014;
8. Receive updates and provide strategic overview on the work of the Joint Action Group (JAG), and the Community Harm & Risk Management Meeting (ChRMM);
9. Carry out the Partnerships statutory responsibility to initiate a Domestic Homicide Review by identifying a chair and administrative support to establish a Panel when appropriate. To manage the process, approve the Domestic Homicide Review report and action plan and monitor its implementation to ensure outcomes are met;
10. Keep an overview of Community Trigger applications and form a Panel to assess and monitor applications when necessary, and implement any recommendations arising from this;
11. Lead on the strategic co-ordination of activity to tackle Serious Organised Crime (SOC) activity to disrupt local Organised Crime Groups;
12. Take a leading role in tackling domestic abuse, promoting intelligence sharing between partners, tackling extremist views and delivering the Prevent agenda.

## Governance Structure

The structure of the Partnership has been designed to ensure the delivery of the Partnership's Priorities.



## Frequency of meetings

The Partnership will meet 6 monthly or more frequently if required.

## Membership:

|   |   |
|---|---|
| Chief Operating Officer (Chair)                                   | Epsom & Ewell Borough Council               |
| Borough Police Commander (Vice Chair)                             | Surrey Police                               |
|   |   |
| Chairman/Chair of Environment and Safe Communities Committee      | Epsom and Ewell Borough Council             |
| Surrey County Council Member rep nominated by the Local Committee | Surrey County Council                       |
| Head of Housing and Community Representative                      | Epsom & Ewell Borough Council               |
| Representative  | Office of the Police and Crime Commissioner |
| Representative  | Surrey Fire & Rescue Service                |
| Officer representative  | Surrey County Council                       |
| Representative  | Surrey Downs Clinical Commissioning Group   |
| Representative  | National Probation Service                  |
| Director  | Rosebery Housing Association                |
| Representative  | Epsom Business Improvement District (BID)   |
| Representative  | Voluntary Sector eg Victim Support          |

Secretariat - Environmental Health Manger / Community Safety Officer

## Reporting requirements and scrutiny of the Partnership

The Community Safety Partnership will publish an annual report setting out relevant data on crime in the local area, and partnership priorities for the year ahead. The Audit, Crime & Disorder and Scrutiny Committee of Epsom & Ewell Council are responsible for the scrutiny of the Partnership's priorities and activities on an annual basis.